



# Company Profile

# EXECUTIVE SUMMARY

All Freight Support Services Ltd is a company registered with the Corporate Affairs Commission of the Federal Republic of Nigeria with the registration number: RC: 241736. One of the main objective for which the company was established is to provide maritime operations and offshore support services in maritime and oil & gas industry.

All freight Support Services Ltd is focused on our customers' needs for quality and flexibility, running under rules and regulations of the nation and maritime industry. All freight Support Services Ltd is investment driven, technically and professionally staffed with high standard of proficiency.



# Vision

To be a leading company providing maritime support services solutions to the Nigerian Maritime Industry through innovative ideas, quality services, optimum utilization of resources and the deployment of the best local and international manpower capabilities



# Mission

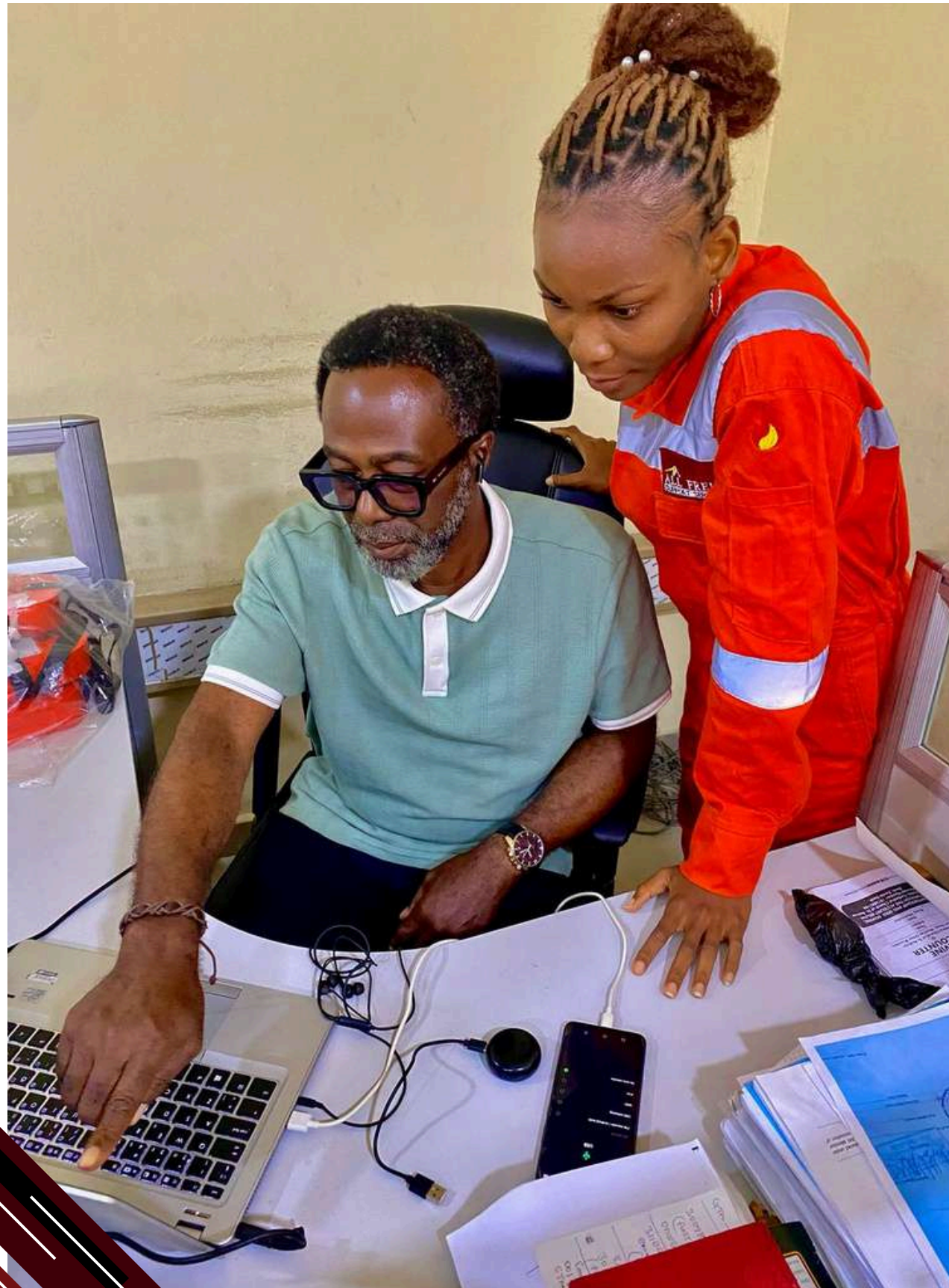
To be a leading company providing maritime support services solutions to the Nigerian Maritime Industry through innovative ideas, quality services, optimum utilization of resources and the deployment of the best local and international manpower capabilities



# MISSION STATEMENT

- 1 To deliver our services with technical and professional competence.
- 2 To ensure that our logistic service delivery is within the Best Global and international Standards. with technical and professional competence.
- 3 To ensure that our clients and Regulatory Authorities requirements and procedures are adhered to at all times.
- 4 That we maintain a safety Culture and practice.





# OUR VALUES

1

Trust

2

Excellence

3

Commitment

4

Innovative



# Our Services

We provide a full range of specialist logistics, stevedoring, on/offshore terminal operations, material and cargo handling, haulage and marine support services to the oil, gas, energy and industrial sectors:





At AFSSL, our current onshore stevedoring operations are structured around two core activities: Lifting & Hoisting and Manual Handling. All lifting operations begin with a formal job request submitted through SPDC (Renaissance) by the client. This request is validated with an approved MMR (Material Movement Request) to confirm account allocation. Once approved, it is communicated to all relevant stakeholders including Marine, Warehouse, Safety, and Jetty Marshals. Jobs are then assessed to determine if they are Routine or Non-Routine. Appropriate equipment such as cranes and forklifts, along with trained lifting personnel, are deployed for execution. The process involves direct loading to barges or backloading to quayside or trucks. All tonnages are weighed, recorded per lift, and jointly signed off by both the client and SPDC representative. Items meant for barges or passenger boats are weighed by the stevedoring team to ensure accurate load tracking and documentation.

For Manual Handling, clients provide direct information on items to be loaded manually to the AFSSL team. Similar to lifting jobs, all manually handled items are subjected to weighing and documentation. Backloaded items also follow the same weighing procedure. To ensure compliance and accuracy, all items must have their weight recorded and approved through a valid gate pass before any commercial processing can occur. This structured and transparent approach ensures operational efficiency, accountability, and safety across all stevedoring activities, reinforcing AFSSL's commitment to excellence in cargo handling and logistics support.

# STEVEDORING



1

Dedicated personnel for port/terminal operations.

2

On/offshore hire, cargo pre-shipment surveys.

3

Dedicated personnel for port/terminal operations.

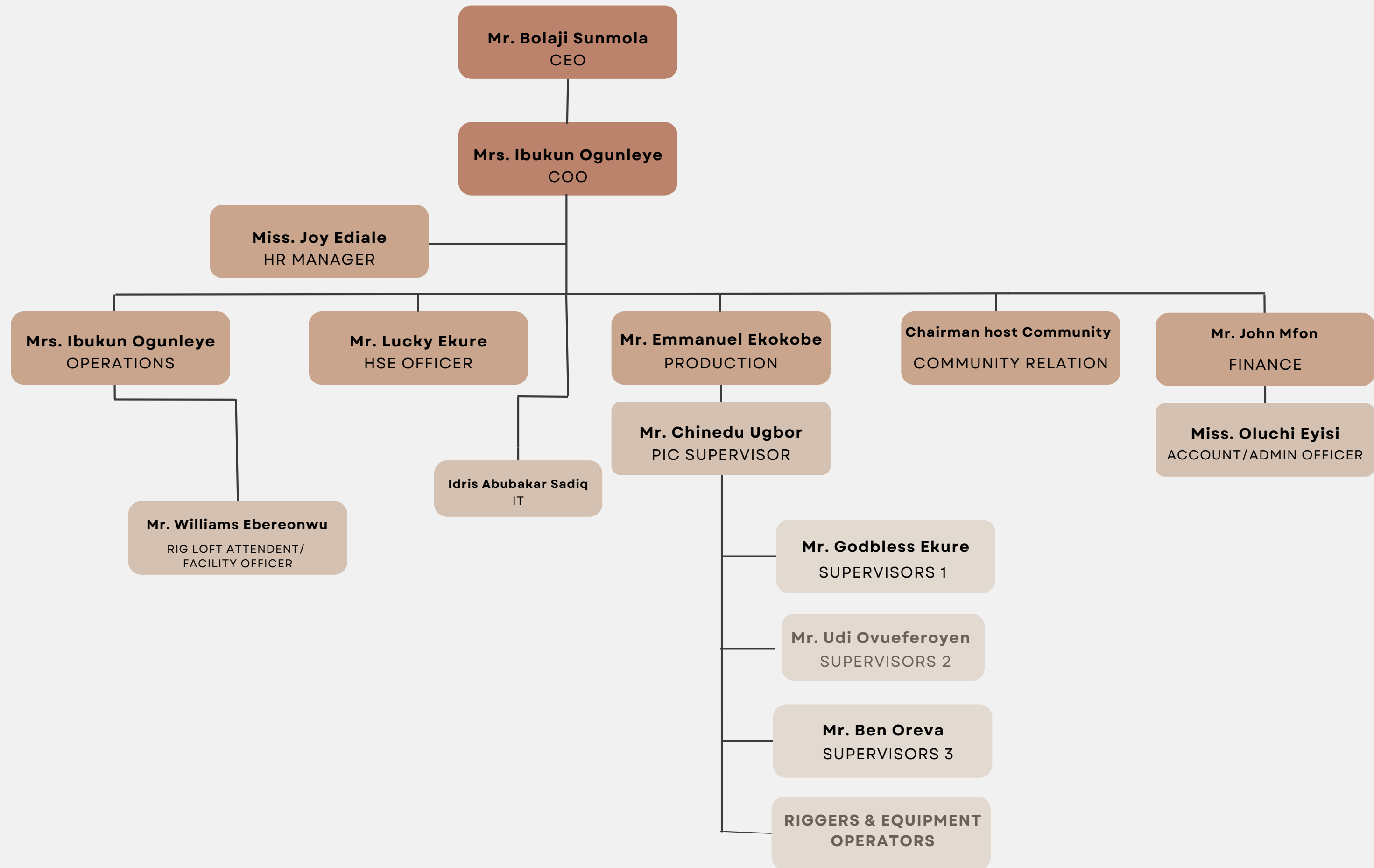
# CARGO HANDLING

## All types of Cargo:

- 1 Containerized
- 2 Break bulk
- 3 Consolidation Cargo
- 4 Bulk liquid and dry cargoes
- 5 Vehicles, heavy & over dimension cargo
- 6 Chartered vessels
- 7 Rail Cargo Handling



# AFSS ORGANIZATION CHART



# CARGO SUPERINTENDENT

## All types of Cargo:

- 1 Survey
- 2 Measurement
- 3 Super Cargo
- 4 Tallying and Security



## Management Profile



**BOLAJI SUNMOLA**

*Chief Executive Officer*

Is a seasoned manager of various schools of management and marketing in England attended London school of Accountancy Teeside polytechnic now Teeside University, Middlesbrough, England. Who started his working career as a young youth corper, as an insurance executive, thereafter got employed with Petro- Organico an affiliate of Exxon Mobil USA marketing Petro chemicals, Paramins to the oil industry.

After years of meritorious services in the organization he resigned to start his own entrepreneurial journey by marketing oil products.

With a vision to develop beyond the ordinary, in 1988 he cut his teeth in the maritime industry by presenting to the then executive management of Nigerian Port Authority the need to enhance their earnings through the use of cargo surveyors at the ports, jetties, terminals across the nation. The introduction brought a lot of gains and also an increment in revenue generated. To date he has remained in the industry providing his humble quota to the development of the maritime industry in Nigeria, very versatile and grounded specifically working assiduously to the growth of stevedoring operations in the maritime industry. He is also the Chairman of the Nigerian Ports Consultative Council (**NPCC**) and the National President of National Association of Stevedoring Operators (**NASO**), an umbrella Association for all the stevedoring Operators in Nigeria.

## Management Profile



**MRS OGUNLEYE IBUKUN VICTORIA**

*Chief Operating Officer*

A professional with over 20 years of experience in the business operations world. Graduated as an engineer from the University of Ilorin and also from the Lagos Business School.

Organized and efficient multi tasker with great attention to details. Overseas all the departments, receives reports from departmental heads. Represent the company in major related events. Compilation and sending of terminal reports. Key player in measuring company's progress and attainments.

## Management Profile



**Miss Joy Ediale**

*Head of Human Resources*

Joy Ediale is a seasoned Human Resources Manager with an impressive track record of over 5 years in the field of employee performance development and human resources. She brings a wealth of cognitive experience to her role, demonstrating a deep understanding of the intricacies involved in fostering professional growth and organizational success.

As a dedicated professional, she is a fully registered member of the Chartered Institute of Human Resource Management(MCIHRM), underscoring her commitment to upholding industry standards and best practices. Her status as a certified human resource professional(CHRP) further attests to her expertise and proficiency in the dynamic realm of human resources.

## Management Profile



**Mr. Emmanuel Efe Ekokobe**

*Head of Production*

Mr. Ekokobe is our Environmental Impact Assessment, HSSE Operation, Project Supervision, Security & Logistics Operations.

He has a broad set of skills applicable across different sectors and roles. Having a progressive 10 years of experience in the oil & gas industry.

Enthusiastic achiever in promoting Health, Safety and Environmental requirements, experienced in oil & gas security operations as well as interfacing with GSA. Well-rounded, productive and passionate, result oriented. Highly skilled in HSE operation, Environmental Impact Assessment, Field Work operations, Security and Logistics and Technical reporting. Committed to enforcing HSE compliance, Hazard identification and control.

Earned B.Sc. Degree in Urban and Regional planning, Certification in Oil & Gas Safety and Health Management System from Institute of Drilling and Petroleum Engineers (IDPE), certificate in Operations Management from Alison.com, NEBOSH, Certification in Occupational Health and Safety, Diploma Certification in Operations Management.

## Management Profile



**Mfon John**

*Accountant*

An experienced accountant with a robust background and expertise in delivering comprehensive accounting services. With over seven years of experience in accounting, taxation, budgeting, and payroll management, he upholds the values of integrity, accountability, respect, and professional due care.

Throughout his career, he has demonstrated exceptional proficiency in financial analysis and strategic planning, ensuring organizations achieve their fiscal objectives with precision. His strong analytical skills enable him to interpret complex financial data, providing insights that drive informed decision-making.

He holds a **B.Sc. in Accounting** from the **University of Uyo, Uyo** and remains committed to continuous professional development, staying updated with the latest industry trends and regulatory changes.

His core responsibilities include **Financial Reporting & Analysis, Tax Compliance, Budgeting & Forecasting, Payroll, and Account Reconciliation in alignment with International Financial Reporting Standards (IFRS).**



## Management Profile

### **BENJAMIN G. GOLD**

*Head of Marine & Logistics*

The Head of Marine & Logistics is responsible for planning, coordinating, and monitoring marine & logistics operations such as warehousing, inventory, transportation, and supply chain processes.

Captain Gold a Master Mariner, has over twenty (20) years of experience in the Management of Petroleum Products, Terminal Safety and Management Systems, Risk Management, Ship Handling and Risk Management, Maritime Asset Management, Operations Integrity, Health Safety, Environmental Safety, Behavior Based Safety, Tier-3 Emergency Response Management. Dedicated, self-motivated, Marine Specialist and a true professional in shipping, with a significant background in the management of petroleum products, terminal safety, and management system structure. Strong professional experience that will help in ensuring strong controls and optimum performance. Ensure safe and efficient day-to-day management/running of the operations.

# OTHER KEY PERSONNEL'S IN OPERATIONS



1

- GEAR STORE KEEPER
- ACCOUNT/ADMIN SUPERINTENDENT
- SUPERVISOR'S
- GEAR MAINTANANCE OFFICERS
- TRUCK DRIVERS
- CRANE/WINCHMEN
- CARGO INSPECTORS/TALLY  
CLERKS/ONBOARD WATCH MEN
- DOCKWORKERS/RIGGERS
- GEAR STORE KEEPER

# MARKETING SEGEMENTS SERVICES



1

- Project handling.
- Bulk cargo handling.
- Terminal operations.
- Haulage.
- Forwarding.
- Free and bonded warehousing.
- Intermodal transport.
- Export operations.
- Inland containers transfer.

# OUR EXPERIENCE

- Provided Cargo Surveyor and Superintendent Operations at Warri Port, Delta State (1998 - 2008).
- Provided Cargo Tally Clerks and Onboard security at Five star Logistics Terminal Tin-can Island Roro Port Apapa (2005 - 2016).
- Provided vessel security watchmen for vessel's that called Five Star Logistics terminal Tin-can Island Roro Port Apapa (2005 - 2016)
- Presently starting up a Container Freight Station Terminal/export processing zone at Bodija Rail Terminal Ibadan for loading and offloading of cargo imports/exports through rail corridor.





... Thank you ...

